



WIFI solution II

-----remote control multiple Led screens via WIFI

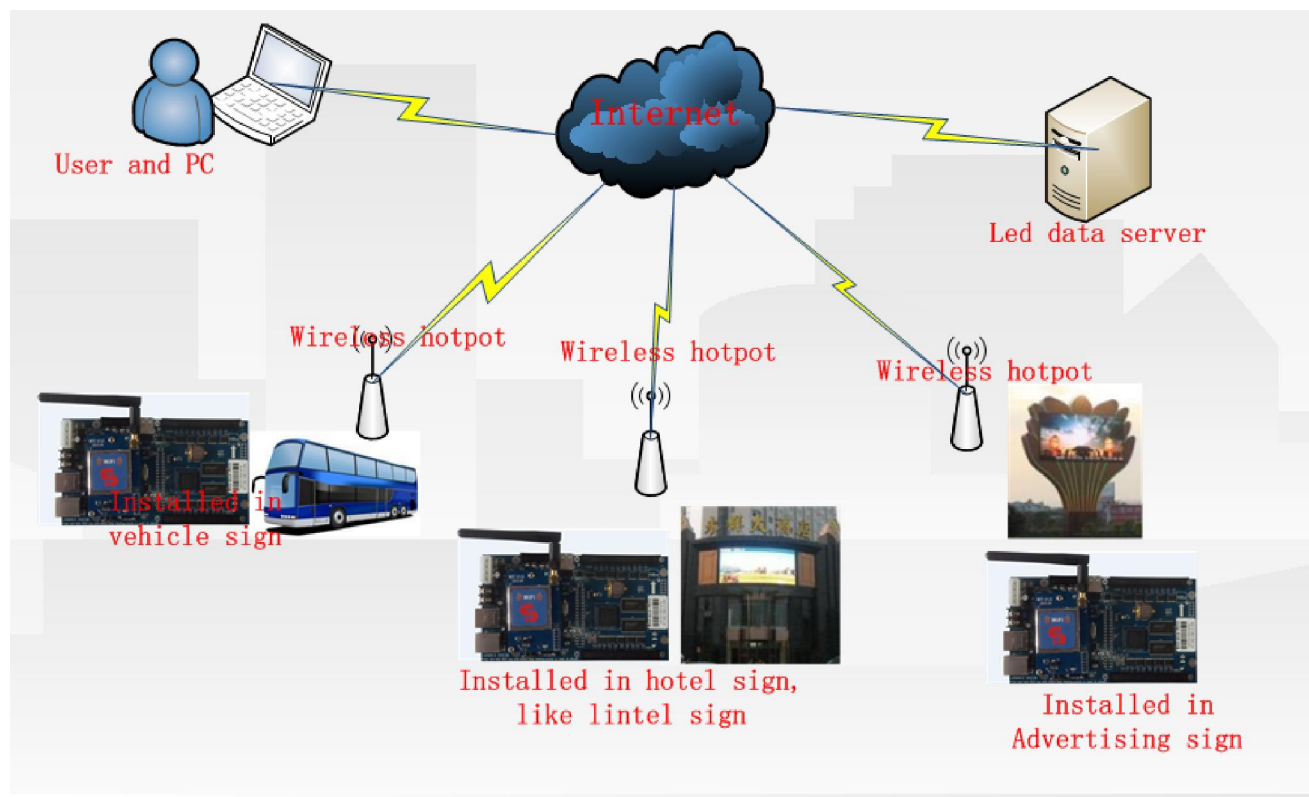
Principle:

There is hotspot nearby led panel, led control card could access to internet via WIFI; customer could send program via server, also no need to use 3G.

-----this is WIFI for wireless remote control.

Diagram connection

Led screens located in different places accessing to internet via wireless hotspots, users in remote office can send program to these led screens.





Preparations:

Hardware: Xixun controller K10 with WIFI modem, laptop, RJ45 cable, wireless router or Wireless hotspot

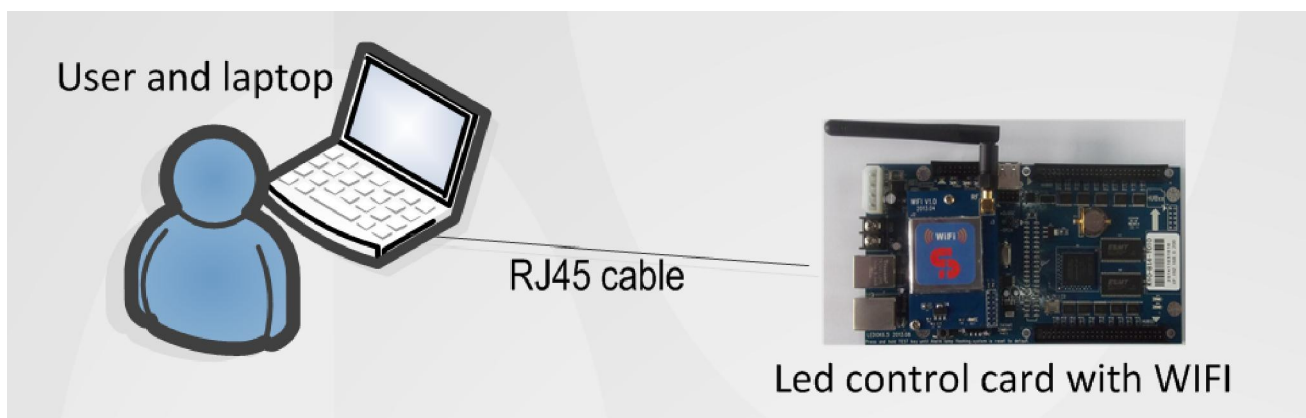
Software: LededitorV10, Ledset2.0 software

Steps of settings

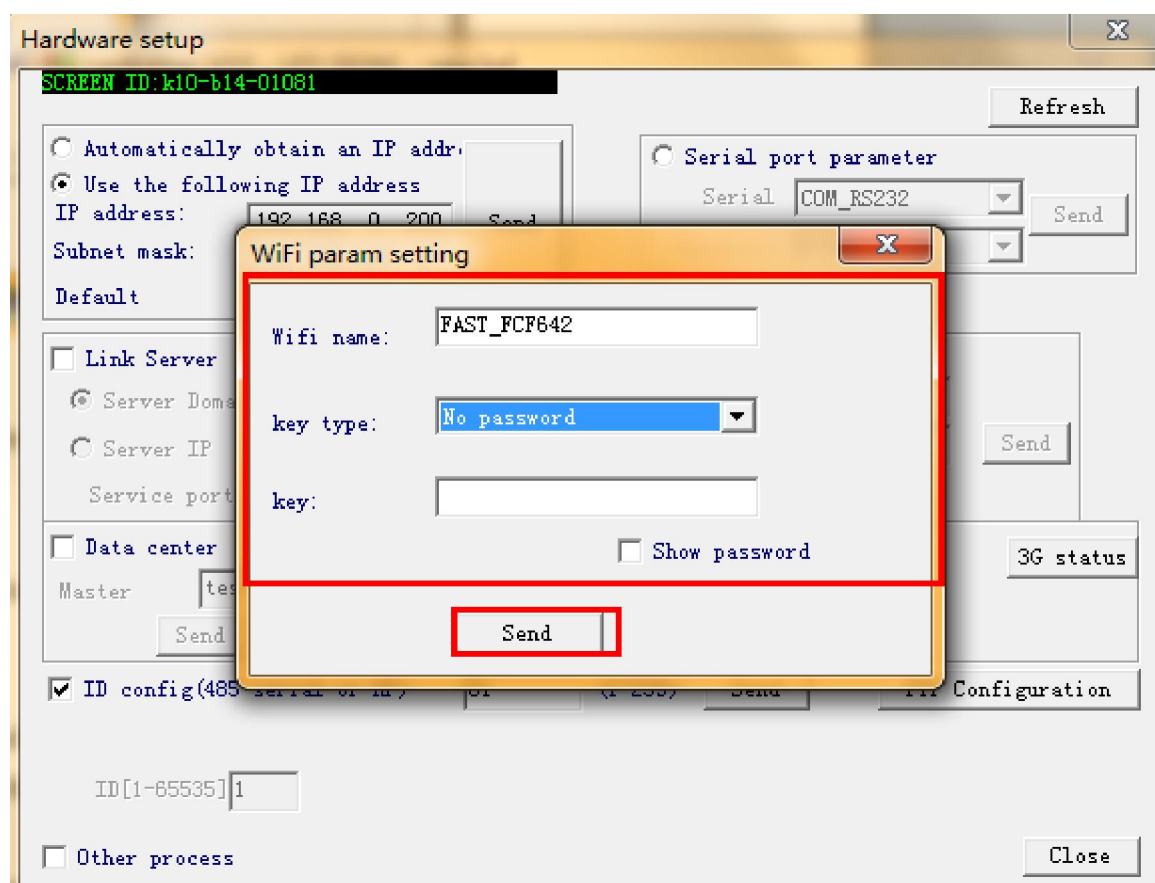
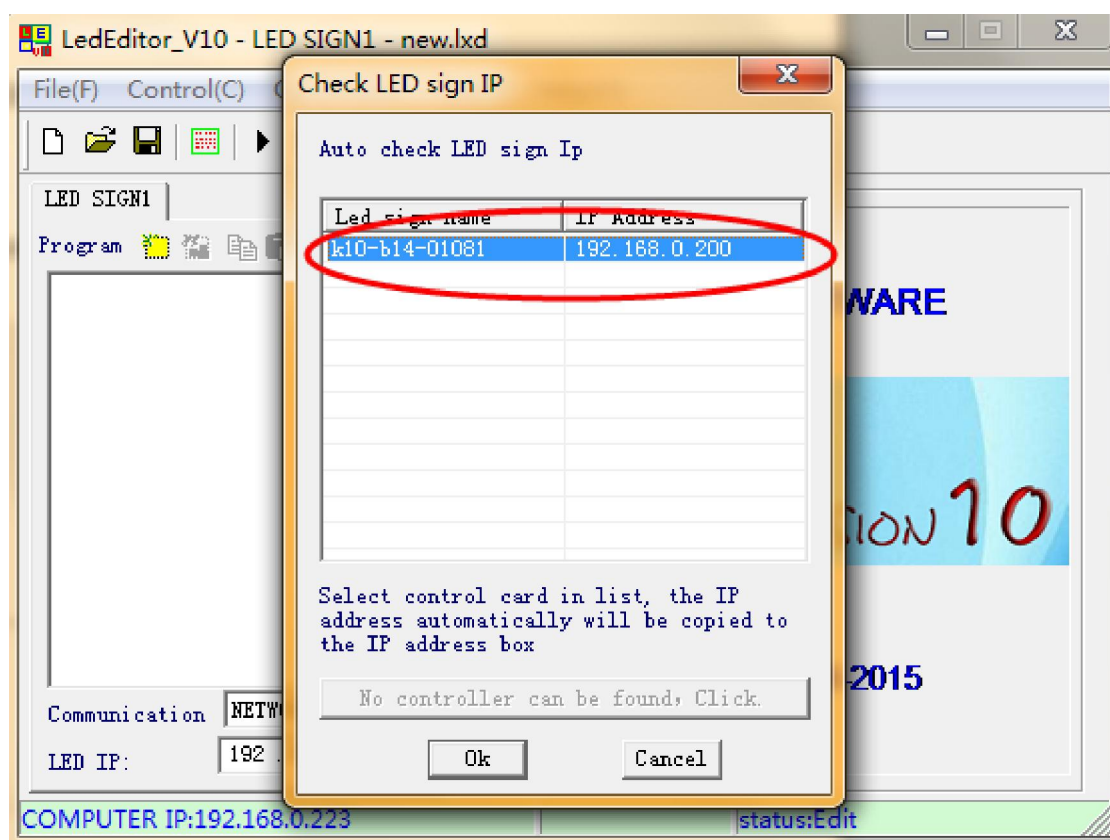
For example: Led control card ex-factory IP address is 192.168.0.200

Wireless hotspot's Default Gateway: 192.168.1.1

Step1, if customer needs to do settings on site then needs to prepare a laptop to set WIFI for led control card.



Running LededitorV10 software and detect led sign IP address then enter Hardware setup, set WIFI information and send, will see tip message come out and saying "Set WIFI param success"





Step2, set Link Server, Server Domain: www.ledm2m.net and press Send button, then tip message will come out.

Hardware setup

SCREEN ID:k10-b14-01081

☐ Automatically obtain an IP addr.

☒ Use the following IP address

IP address: 192.168.0.200 Send

Subnet mask: 255.255.255.0

Default 192.168.0.1

☐ Serial port parameter

Serial COM_RS232 Send

Baudrate 57600

WiFi

☒ Link Server

☒ Server Domain www.ledm2m.net Domain backup

☐ Server IP Custom Name k10-b14-01081 Send

Service port 50001 status:no

☒ Data center

Master hw Send

3G status

☒ ID config(485 serial or RF) 81 (1~239) Send

FTP Configuration

ID[1-65535] 1

☐ Other process

Close





Step3, write down master name and press send button, tip message will come out.

Hardware setup

SCREEN ID:k10-b14-01081

☐ Automatically obtain an IP addr.

☒ Use the following IP address

IP address: 192.168.0.200 Send

Subnet mask: 255.255.255.0

Default 192.168.0.1

☐ Serial port parameter

Serial COM_RS232 Send

Baudrate 57600

WiFi

☒ Link Server

☒ Server Domain www.ledm2m.net Domain backup

☐ Server IP Custom Name k10-b14-01081 Send

Service port 50001 status:no

☒ Data center

Master hw Send

3G status

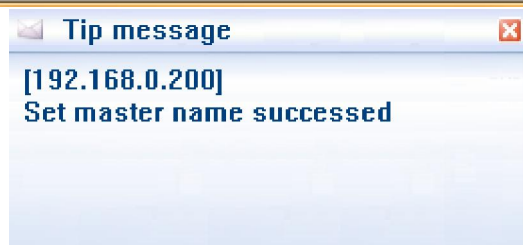
☒ ID config(485 serial or RF) 81 (1~239) Send

FTP Configuration

ID[1-65535] 1

☐ Other process

Close





Step5, after settings, please re-enter hardware setup and check card status, it will show WIFI.

Hardware setup

SCREEN ID: k10-b14-01081

☐ Automatically obtain an IP address

☒ Use the following IP address

IP address: 192.168.0.200 Send

Subnet mask: 255.255.255.0

Default: 192.168.0.1

☐ Serial port parameter

Serial: COM_RS232 Send

Baudrate: 57600

WiFi

☒ Link Server

☒ Server Domain: www.ledm2m.net Domain backup: Send

☐ Server IP: Custom Name: k10-b14-01081 Send

Service port: 50001

☒ Data center

Master: hw Send

☒ ID config(485 serial or RF) 81 (1~239) Send

FTP Configuration

ID[1-65535]: 1

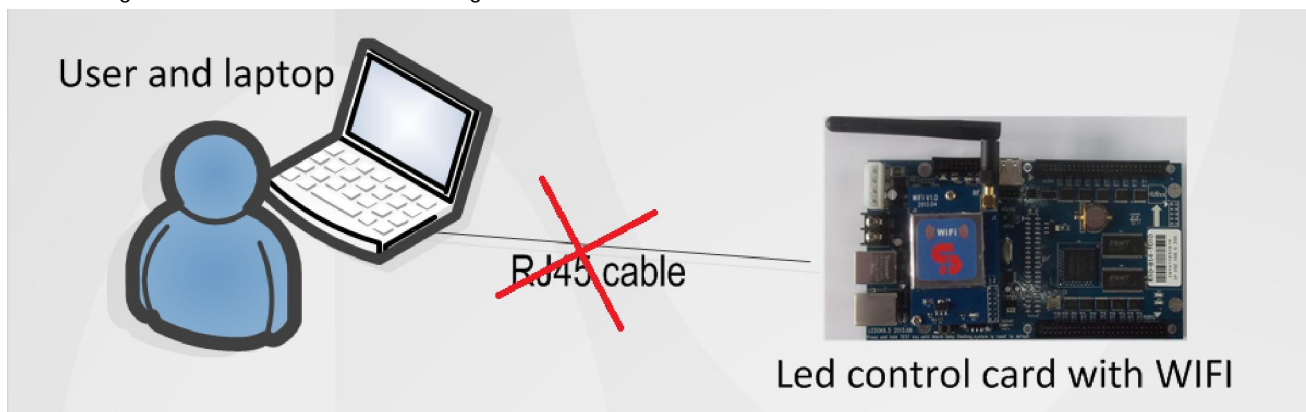
☐ Other process

status:WIFI

3G status

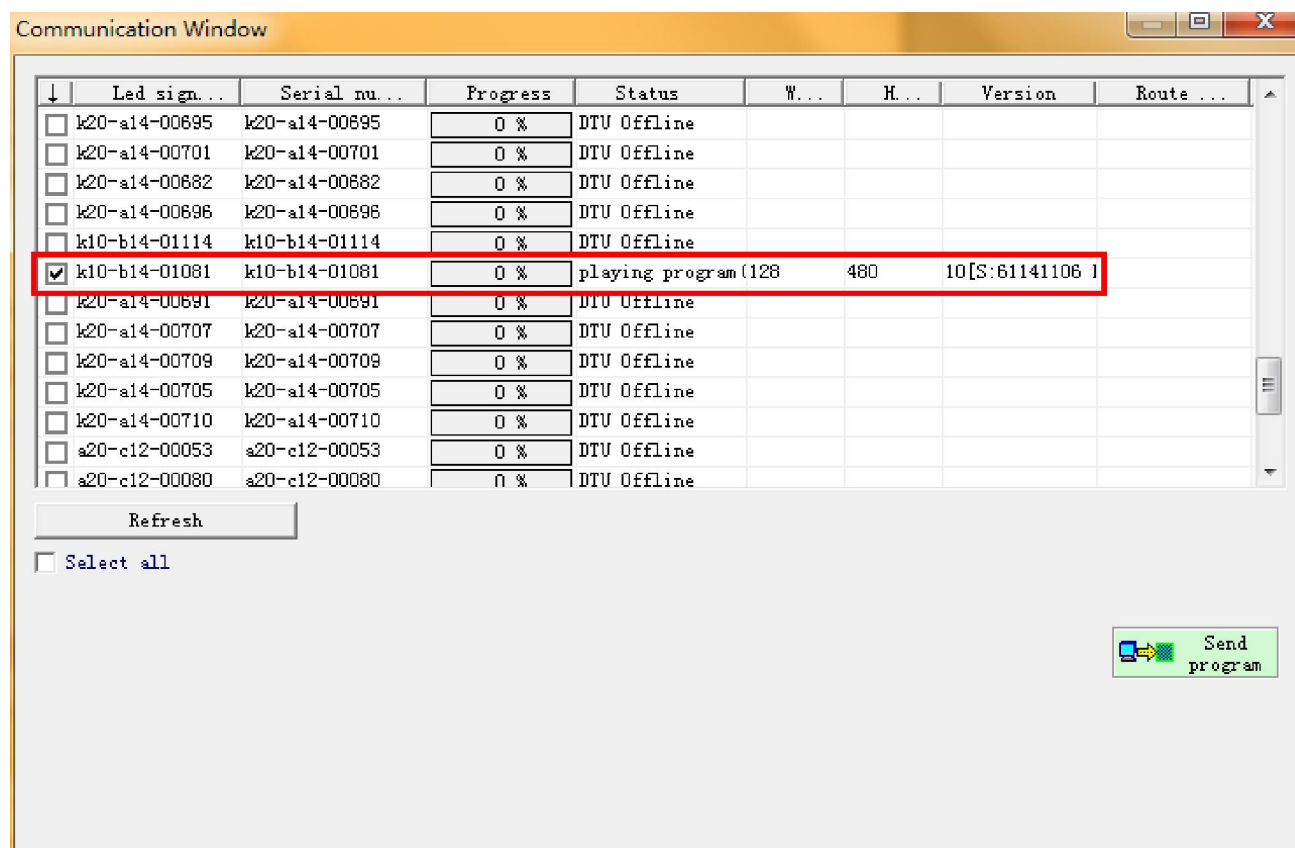
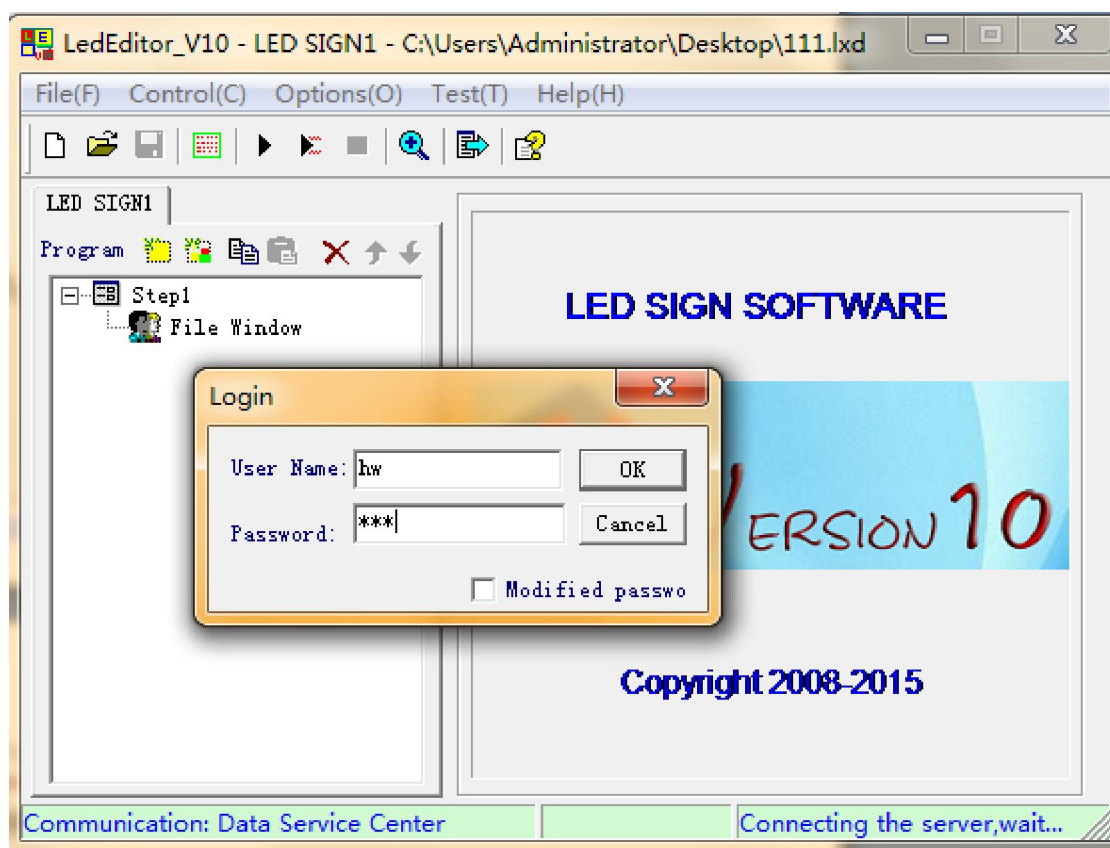
Close

Step5, **disconnect** the RJ45 cable connection. Led control card will get access to wireless hotspot automatically. See Internet light on WIFI modem, Internet light will solid on means WIFI is ok.





Step6, running lededitorV10 again in your office computer, editing program and choose send via WIFI, login user name and send via WIFI.





Attention: If led control card IP address and wireless hotspot default gateway in the same network segment, then need to change led control card IP into other network segment, different from wireless hotspot default gateway after sending WIFI information.

For example: led control card IP address: 192.168.0.200

Wireless hotspot default gateway: 192.168.0.1

Then firstly, need to run LededitorV9 and enter Hardware setup, send WIFI information success and set Link Server and Master Name success.

After that, back to Ledset2.0 software and enter "Network IP parameter settings" and change led control card IP address into 192.168.2.200 for example.

Then disconnect the RJ45 connection, the led control card will get access to WIFI.